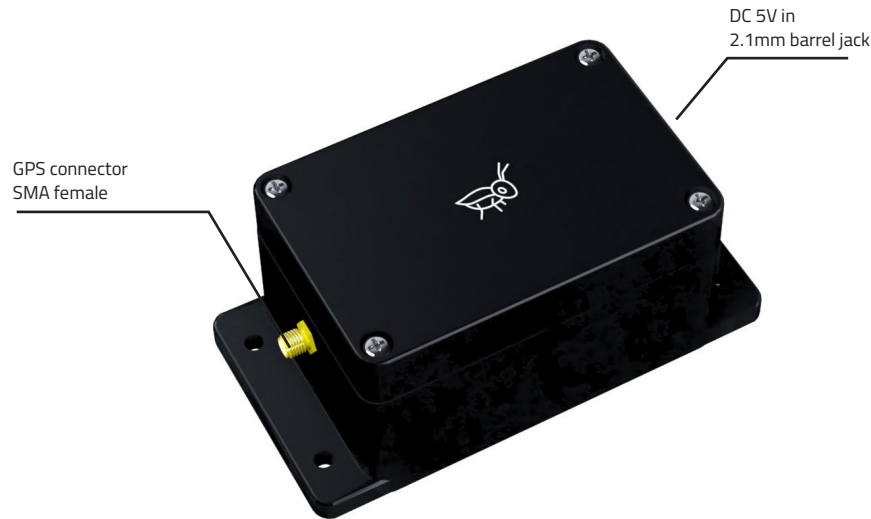
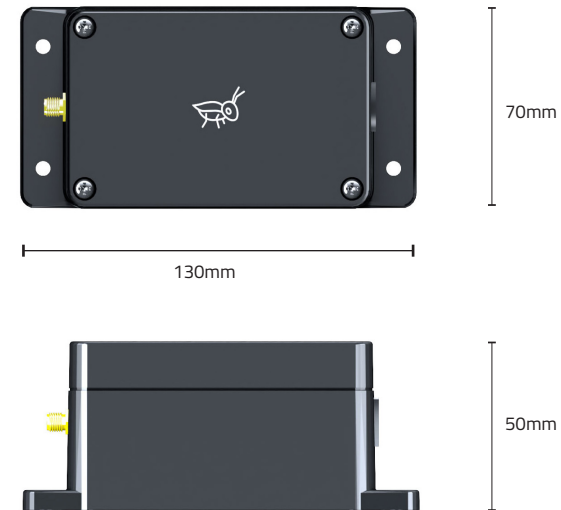


GRILLO PULSE SPECIFICATIONS



*actual color may vary from image



CLOUD-CONNECTED DEVICE

This smart device connects to your local network and sends all telemetry to the Grillo Cloud (hosted on AWS).

- Input: 5 V-5.5 V @500 mA
- Weight: 160g
- Material: Plastic
- Wifi 2.4Ghz (does not work with 5Ghz networks)
- *Ethernet / Cellular connectivity available on request
- GPS for millisecond time accuracy
- 3m GPS external antenna with SMA connector

TRIAXEL MEMS ACCELEROMETER

The internal accelerometer features unusually low noise for a MEMS accelerometer, allowing you to detect smaller vibrations than typically possible.

- 3-Axis MEMS accelerometer
- 20-bit analog-to-digital converter (ADC)
- Low noise density 25 $\mu\text{g}/\sqrt{\text{Hz}}$
- Low 0 g offset drift
- $\pm 2.048\text{g}$
- 256,000 LSB/g sensitivity per axis
- 1 – 1000 Hz Frequency (Low-Pass)
- 0.0095 – 10 Hz Frequency (High Pass)
- Up to 125Hz telemetry to cloud